

## RWT COMPANY PROFILE

### HISTORY

- ▶ The roots of the company date back to 1921 when Josef Rojek, the great-grandfather of today's owner Ing. Petr Rojek founded a company named Rojek in Častolovice. The company achieved a significant development and successfully sold its turning machines all over the world.
- ▶ After restitutions of the family property, the activity of the company was restored in 1991 and Ing. Petr Rojek became co-owner along with his father and brother. The company quickly followed the tradition of manufacturing turning machines and within a few years it became a leading Czech manufacturer and supplier of the turning technology.

### PRESENT

- ▶ In 1999, Ing. Petr Rojek decided to carry out his ideas about the further development by an independence and a foundation of his own company RWT, s.r.o. (Ltd.) based in Rychnov nad Kněžnou. The main focus of the company is the manufacture of metalworking machines for deburring and grinding operations. The technical solution, the variability, the quality of the procession and the ease of operation of the machines, are main factors of the successes in sales worldwide.

### SCOPE AND AWARDS

- ▶ The company is purely Czech and ranks among the leading European manufacturers of deburring and grinding machines.. These machines replace strenuous and fairly dangerous manual work while deburring and grinding of the metal parts.
- ▶ After several years of operation in our and foreign markets, our company has received significant awards from the International Engineering Fair in Brno and the International Trade Fair of Engineering Technologies FOR INDUSTRY in Prague.



MSV  
2003

FOR INDUSTRY  
2014



## CONTACTS

### RWT, s. r. o.

Jiráskova 899/2

516 01 Rychnov nad Kněžnou

Czech Republic

### Telephone:

+420 494 534 229

+420 494 534 238

Fax: +420 494 534 119

### www.rwt.cz

rwt@rwt.cz

facebook.com/RojekWideBeltSanders



GPS: 50.171567681, 16.270210147



## RWT

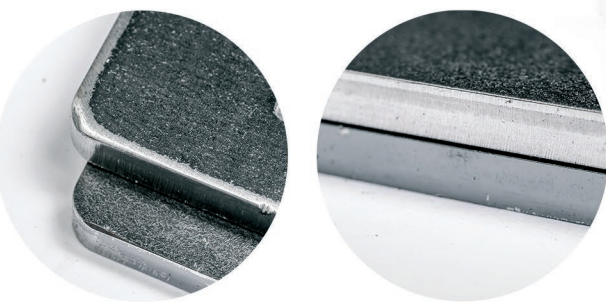
# DEBURRING AND GRINDING MACHINES

ENTGRAT UND SCHLEIFMASCHINEN  
ONTBRAAM EN SLIJPMACHINES

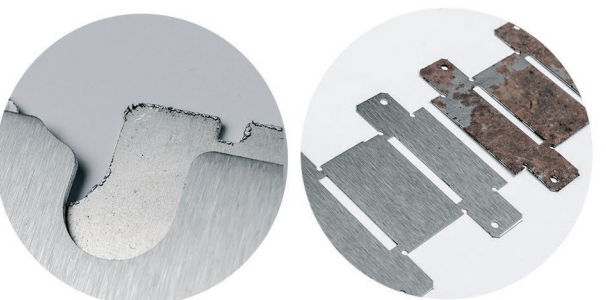
SERIES 120 / 180 / 240



**RWT**  
**STEELLINE 120**  
DEBURRING AND GRINDING MACHINE



**Edge rounding and oxide removal**  
Kantverronding en Oxidentfernung  
Randafwerking en oxideverwijdering



**Deburring and Grinding**  
Entgraten und Schleifen  
Ontbramen en slijpen



**Final surface polishing**  
Polieren der Oberfläche  
Ontbramen en slijpen



**Slag removal**  
Schlackenentfernung  
Slakverwijdering

**SERIES 120**

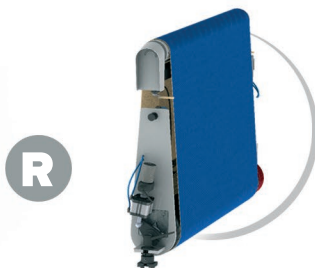


**RWT**  
**STEELLINE 180**  
DEBURRING AND GRINDING MACHINE

Complete solution for Deburring and Grinding of the workpiece with Sanding belt unit R, edge rounding and oxide removal with Disc brush unit D and final surface polishing with Vebrax brush unit B

Komplettlösung zum Entgraten und Schleifen des Produktes mit der Schleifeinheit R, Kantverrondung und Oxidhautentfernung mit der Scheibenbürsteneinheit D und Oberflächenveredelung mit der Vebraxbürste B

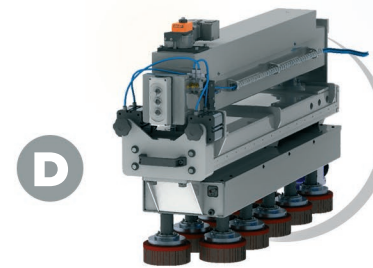
Complete oplossing voor het ontbramen en slijpen van het product met de slijpunit R, kantverronding en oxydehuidverwijdering met de Diskborstelunit D en oppervlakte finishing met de Vebraxborstel B



**Deburring rubbered roller diameter 120 (180, 240) mm**  
- Hardness 35 - 70 Sh  
- Primary burrs removal

Gummierte Schleifeinheit, Rollendurchmesser 120 (180, 240) mm  
- Härte 35 - 70 Sh  
- Entgrätet/Spitzer

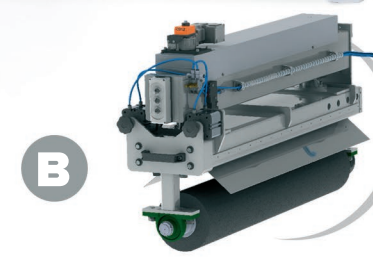
Rubberen Slijpunit, rol diameter 120 (180, 240) mm  
- Hardheid 35 - 70 Sh  
- Verwijdert de braam en spatten



**Disc brushing unit with discs diameter 150 mm**  
- Quick fitting system  
- Edge rounding, oxide removal

Scheibenbürsteneinheit mit Scheibendurchmesser 150 mm  
- Schnellspannsystem  
- Kantverrondung, Oxidhautentfernung

Disk-BorstelUnit, diameter 150mm  
- Snelwisselsysteem  
- Kantverronding en oxydehuidverwijdering



**Vebrax brush diameter 200 (300) mm for final surface polishing**

Vebrax Walze mit einem Durchmesser von 200 (300) mm für die finale Oberflächenbehandlung

Vebrax Borstel diameter 200 (300)mm, Voor eindbewerking oppervlak

**SERIES 180**

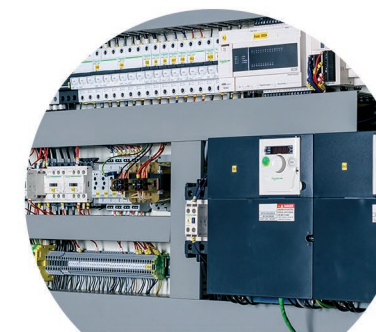


**RWT**  
**STEELLINE 240**  
DEBURRING AND GRINDING MACHINE



**WORKING UNITS**

Working Units  
Arbeid stationen  
Werkstations



**ELECTRIC BOX**

Electric box  
Elektrobox  
Elektrokast



**SLIDING SYSTEM**

Sliding System  
Profilschienenführung  
Lineargeleiding



**TILTABLE CONTROL PANEL**

Tiltable control panel  
Drehbar Bedienfeld  
Draaibaar bedieningspaneel

**SERIES 240**



	Working width				No. of units	R	D	B	* Option, optionen, opties															
	650 mm	1100 mm	1300 mm	1600 mm		Diameter of rubbered roller	No. of discs in unit	Diameter of Vebrax brush	Tiltable control panel	Touch screen 7,5"	Part thickness 0,5 - 160 mm	Automatic measuring	Conveying speed 0,5 - 10 m/min	Pneumatic control height of the roller	Electric control height of the roller	Length of sanding belts			Disc diameter	Motorized lifting of the units D, B	Magnetic table	Vacuum table	Combined table magnet + vacuum	Hypalon conveyor belt
	1900 mm	2200 mm	2620 mm																					
SERIES 120	✓	-	-	-	1 - 6	120	7	200	*	✓	✓	✓	✓	*	*	✓	-	-	150 mm	*	*	*	*	*
SERIES 180	-	✓	✓	-	1 - 4	180	10 - 12	200	*	✓	✓	✓	✓	*	*	✓	*	*	150 mm	*	*	*	*	*
SERIES 240	-	✓	✓	✓	1 - 4	240	10 - 12 - 14	300	*	✓	✓	✓	✓	*	*	-	✓	*	150 mm	✓	*	*	*	*
DE	Arbeitsbreite				Anzahl der Einheiten	Durchmesser der Gummirolle	Scheibenzahl in der Einheit	Durchmesser der Vebrax-Bürste	Drehbar Bedienfeld	Touch-Panel 7,5"	Materialstärke	Automatische Stärkemessung	Vorschub 0,5-10 m/min	Pneumatische Kontrollhöhe der Walze	Elektrische Kontrollhöhe der Walze	Länge der Schleifbänder			Scheibendurchmesser	Motorisiertes Anheben der Einheiten D, B	Magnetisch	Vakuümisch	Kombinierter Magnet + Vakuümisch	Hypalon-Förderband
NL	Werkbreedte				Aantal eenheden	Diameter van rubberen rol	Aantal borstels in Unit	Diameter van de Vebraxborstel	Draaibaar bedieningspaneel	Aanraakpaneel 7,5"	Materiaaldikte	Automatische dikte meting	Snelheid doorvoerband 0,5 - 10 m/min	Pneumatische hoogte instelling van slijpunit	Elektrische hoogterstelling van de rol	Lengte van de schuurband			Borstel diameter	Gemotoriseerde hoogterstelling unit D, B	Magneet tafel	Vacuümtafel	gecombineerde tafel Magneet en Vacuüm	Hypalon Transportband